



Table of Contents

Residential Railing

Residential Railing Gates

Commercial Rails and Gates

Sleeves and Structured Posts

Support Posts and Hardware

Cladding (Post Wrap)

Post Caps

Post Trim Rings

Replacement Rails

Aluminum Inserts

Replacement Balusters

Railing Brackets and Adapters

Bracket Plugs and Screws

Rail Mounts

Picket and Rail Caps

Privacy Fence

Semi-Privacy Fence

Picket Fence

Ranch Rail Fence

Extra Posts and Hardware

Brochures and Warranties

Triad Vinyl Fence and Railing

Residential Railing Kits

Vinyl Rail Kits - 36" tall Straight and Stair Rail Kits with Top T-Rail, 2" x 3 1/2" Bottom Rail and Square Balusters

Item Number White	Item Number Almond	Item Number Khaki	Item Description
TVR1F-S-W	TVR1F-S-A	TVR1F-S-K	1' FLAT RAIL SQ BALUSTER KIT
TVR2F-S-W	TVR2F-S-A	TVR2F-S-K	2' FLAT RAIL SQ BALUSTER KIT
TVR2S-S-W	TVR2S-S-A	TVR2S-S-K	2' STAIR RAIL SQ BALUSTER KIT
TVR3F-S-W	TVR3F-S-A	TVR3F-S-K	3' FLAT RAIL SQ BALUSTER KIT
TVR3S-S-W	TVR3S-S-A	TVR3S-S-K	3' STAIR RAIL SQ BALUSTER KIT
TVR4F-S-W	TVR4F-S-A	TVR4F-S-K	4' FLAT RAIL SQ BALUSTER KIT
TVR4S-S-W	TVR4S-S-A	TVR4S-S-K	4' STAIR RAIL SQ BALUSTER KIT
TVR5F-S-W	TVR5F-S-A	TVR5F-S-K	5' FLAT RAIL SQ BALUSTER KIT
TVR5S-S-W	TVR5S-S-A	TVR5S-S-K	5' STAIR RAIL SQ BALUSTER KIT
TVR6F-S-W	TVR6F-S-A	TVR6F-S-K	6' FLAT RAIL SQ BALUSTER KIT
TVR6S-S-W	TVR6S-S-A	TVR6S-S-K	6' STAIR RAIL SQ BALUSTER KIT
TVR7F-S-W	TVR7F-S-A	TVR7F-S-K	7' FLAT RAIL SQ BALUSTER KIT
TVR7S-S-W	TVR7S-S-A	TVR7S-S-K	7' STAIR RAIL SQ BALUSTER KIT
TVR8F-S-W	TVR8F-S-A	TVR8F-S-K	8' FLAT RAIL SQ BALUSTER KIT
TVR8S-S-W	TVR8S-S-A	TVR8S-S-K	8' STAIR RAIL SQ BALUSTER KIT
TVR9F-S-W	TVR9F-S-A	TVR9F-S-K	9' FLAT RAIL SQ BALUSTER KIT
TVR10F-S-W	TVR10F-S-A	TVR10F-S-K	10' FLAT RAIL SQ BALUSTER KIT



Kits Include:

- Top T-Rail with Aluminum Insert
- Bottom 2" x 3 1/2" Rail
- 1 1/2" x 1 1/2" Square Balusters
- top and bottom brackets
- bracket screws and screw covers
- support picket in kits over 4'

Stair Rail brackets in kits can be used from a 28 degree to a 42 degree angle.

Post, Post Cap and Trim Ring NOT included in kits

Vinyl Rail Kits - 36" tall Straight and Stair Rail Kits with Top T-Rail, 2"x 3 1/2" Bottom Rail and Turn Balusters

Item Number White	Item Number Almond	Item Number Khaki	Item Description
TVR1F-T-W	TVR1F-T-A	TVR1F-T-K	1' FLAT RAIL TURN BALUSTER KIT
TVR2F-T-W	TVR2F-T-A	TVR2F-T-K	2' FLAT RAIL TURN BALUSTER KIT
TVR2S-T-W	TVR2S-T-A	TVR2S-T-K	2' STAIR RAIL TURN BALUSTER KIT
TVR3F-T-W	TVR3F-T-A	TVR3F-T-K	3' FLAT RAIL TURN BALUSTER KIT
TVR3S-T-W	TVR3S-T-A	TVR3S-T-K	3' STAIR RAIL TURN BALUSTER KIT
TVR4F-T-W	TVR4F-T-A	TVR4F-T-K	4' FLAT RAIL TURN BALUSTER KIT
TVR4S-T-W	TVR4S-T-A	TVR4S-T-K	4' STAIR RAIL TURN BALUSTER KIT
TVR5F-T-W	TVR5F-T-A	TVR5F-T-K	5' FLAT RAIL TURN BALUSTER KIT
TVR5S-T-W	TVR5S-T-A	TVR5S-T-K	5' STAIR RAIL TURN BALUSTER KIT
TVR6F-T-W	TVR6F-T-A	TVR6F-T-K	6' FLAT RAIL TURN BALUSTER KIT
TVR6S-T-W	TVR6S-T-A	TVR6S-T-K	6' STAIR RAIL TURN BALUSTER KIT
TVR7F-T-W	TVR7F-T-A	TVR7F-T-K	7' FLAT RAIL TURN BALUSTER KIT
TVR7S-T-W	TVR7S-T-A	TVR7S-T-K	7' STAIR RAIL TURN BALUSTER KIT
TVR8F-T-W	TVR8F-T-A	TVR8F-T-K	8' FLAT RAIL TURN BALUSTER KIT
TVR8S-T-W	TVR8S-T-A	TVR8S-T-K	8' STAIR RAIL TURN BALUSTER KIT
TVR9F-T-W	TVR9F-T-A	TVR9F-T-K	9' FLAT RAIL TURN BALUSTER KIT
TVR10F-T-W	TVR10F-T-A	TVR10F-T-K	10' FLAT RAIL TURN BALUSTER KIT



Kits Include:

- Top T-Rail with Aluminum Insert
- Bottom 2" x 3 1/2" Rail
- 1 1/2" x 1 1/2" Turn-Style Balusters
- top and bottom brackets
- support picket in kits over 4'

Stair Rail brackets in kits can be used from a 28 degree to a 42 degree angle.

Post, Post Cap and Trim Ring NOT included in kits

Residential Railing Kits

Vinyl Rail w/Aluminum Balusters Kits - 36" tall Straight and Stair Rail Kits with Vinyl T-Rail, 2" x 3 1/2" Bottom Rail and ROUND BLACK Powder Coated Balusters

Item Number White Vinyl	Item Number Almond Vinyl	Item Number Khaki Vinyl	Item Description
TVR1F-PC-B-W	TVR1F-PC-B-A	TVR1F-PC-B-K	1' FLAT RAIL ALUM ROUND BAL KIT
TVR2F-PC-B-W	TVR2F-PC-B-A	TVR2F-PC-B-K	2' FLAT RAIL ALUM ROUND BAL KIT
TVR2S-PC-B-W	TVR2S-PC-B-A	TVR2S-PC-B-K	2' STAIR RAIL ALUM ROUND BAL KIT
TVR3F-PC-B-W	TVR3F-PC-B-A	TVR3F-PC-B-K	3' FLAT RAIL ALUM ROUND BAL KIT
TVR3S-PC-B-W	TVR3S-PC-B-A	TVR3S-PC-B-K	3' STAIR RAIL ALUM ROUND BAL KIT
TVR4F-PC-B-W	TVR4F-PC-B-A	TVR4F-PC-B-K	4' FLAT RAIL ALUM ROUND BAL KIT
TVR4S-PC-B-W	TVR4S-PC-B-A	TVR4S-PC-B-K	4' STAIR RAIL ALUM ROUND BAL KIT
TVR5F-PC-B-W	TVR5F-PC-B-A	TVR5F-PC-B-K	5' FLAT RAIL ALUM ROUND BAL KIT
TVR5S-PC-B-W	TVR5S-PC-B-A	TVR5S-PC-B-K	5' STAIR RAIL ALUM ROUND BAL KIT
TVR6F-PC-B-W	TVR6F-PC-B-A	TVR6F-PC-B-K	6' FLAT RAIL ALUM ROUND BAL KIT
TVR6S-PC-B-W	TVR6S-PC-B-A	TVR6S-PC-B-K	6' STAIR RAIL ALUM ROUND BAL KIT
TVR7F-PC-B-W	TVR7F-PC-B-A	TVR7F-PC-B-K	7' FLAT RAIL ALUM ROUND BAL KIT
TVR7S-PC-B-W	TVR7S-PC-B-A	TVR7S-PC-B-K	7' STAIR RAIL ALUM ROUND BAL KIT
TVR8F-PC-B-W	TVR8F-PC-B-A	TVR8F-PC-B-K	8' FLAT RAIL ALUM ROUND BAL KIT
TVR8S-PC-B-W	TVR8S-PC-B-A	TVR8S-PC-B-K	8' STAIR RAIL ALUM ROUND BAL KIT
TVR9F-PC-B-W	TVR9F-PC-B-A	TVR9F-PC-B-K	9' FLAT RAIL ALUM ROUND BAL KIT
TVR10F-PC-B-W	TVR10F-PC-B-A	TVR10F-PC-B-K	10' FLAT RAIL ALUM ROUND BAL KIT



Kits Include:

- Top Vinyl T-Rail with Aluminum Insert
- Bottom Vinyl 2" x 3 1/2" Rail
- 3/4" Round Black Aluminum Powder Coated Balusters
- top and bottom brackets
- bracket screws and screw covers
- support picket in kits over 4'

Stair Rail brackets in kits can be used from a 28 degree to a 42 degree angle.

Post, Post Cap and Trim Ring NOT included in kits

Vinyl Rail w/Aluminum Baluster Kits - 36" tall Straight and Stair Rail Kits with Vinyl T-Rail, 2" x 3 1/2" Bottom Rail and SQUARE BLACK Powder Coated Balusters

Item Number White Vinyl	Item Number Almond Vinyl	Item Number Khaki Vinyl	Item Description
TVR1F-PC-B-SQ-W	TVR1F-PC-B-SQ-A	TVR1F-PC-B-SQ-K	1' FLAT RAIL ALUM SQUARE BAL KIT
TVR2F-PC-B-SQ-W	TVR2F-PC-B-SQ-A	TVR2F-PC-B-SQ-K	2' FLAT RAIL ALUM SQUARE BAL KIT
TVR2S-PC-B-SQ-W	TVR2S-PC-B-SQ-A	TVR2S-PC-B-SQ-K	2' STAIR RAIL ALUM SQUARE BAL KIT
TVR3F-PC-B-SQ-W	TVR3F-PC-B-SQ-A	TVR3F-PC-B-SQ-K	3' FLAT RAIL ALUM SQUARE BAL KIT
TVR3S-PC-B-SQ-W	TVR3S-PC-B-SQ-A	TVR3S-PC-B-SQ-K	3' STAIR RAIL ALUM SQUARE BAL KIT
TVR4F-PC-B-SQ-W	TVR4F-PC-B-SQ-A	TVR4F-PC-B-SQ-K	4' FLAT RAIL ALUM SQUARE BAL KIT
TVR4S-PC-B-SQ-W	TVR4S-PC-B-SQ-A	TVR4S-PC-B-SQ-K	4' STAIR RAIL ALUM SQUARE BAL KIT
TVR5F-PC-B-SQ-W	TVR5F-PC-B-SQ-A	TVR5F-PC-B-SQ-K	5' FLAT RAIL ALUM SQUARE BAL KIT
TVR5S-PC-B-SQ-W	TVR5S-PC-B-SQ-A	TVR5S-PC-B-SQ-K	5' STAIR RAIL ALUM SQUARE BAL KIT
TVR6F-PC-B-SQ-W	TVR6F-PC-B-SQ-A	TVR6F-PC-B-SQ-K	6' FLAT RAIL ALUM SQUARE BAL KIT
TVR6S-PC-B-SQ-W	TVR6S-PC-B-SQ-A	TVR6S-PC-B-SQ-K	6' STAIR RAIL ALUM SQUARE BAL KIT
TVR7F-PC-B-SQ-W	TVR7F-PC-B-SQ-A	TVR7F-PC-B-SQ-K	7' FLAT RAIL ALUM SQUARE BAL KIT
TVR7S-PC-B-SQ-W	TVR7S-PC-B-SQ-A	TVR7S-PC-B-SQ-K	7' STAIR RAIL ALUM SQUARE BAL KIT
TVR8F-PC-B-SQ-W	TVR8F-PC-B-SQ-A	TVR8F-PC-B-SQ-K	8' FLAT RAIL ALUM SQUARE BAL KIT
TVR8S-PC-B-SQ-W	TVR8S-PC-B-SQ-A	TVR8S-PC-B-SQ-K	8' STAIR RAIL ALUM SQUARE BAL KIT
TVR9F-PC-B-SQ-W	TVR9F-PC-B-SQ-A	TVR9F-PC-B-SQ-K	9' FLAT RAIL ALUM SQUARE BAL KIT
TVR10F-PC-B-SQ-W	TVR10F-PC-B-SQ-A	TVR10F-PC-B-SQ-K	10' FLAT RAIL ALUM SQUARE BAL KIT

Kits Include:

- Top T-Rail with Aluminum Insert
- Bottom 2" x 3 1/2" Rail
- 3/4" Square Black Aluminum Powder Coated Balusters
- top and bottom brackets
- bracket screws and screw covers
- support picket in kits over 4'

Stair Rail brackets in kits can be used from a 28 degree to a 42 degree angle.

Post, Post Cap and Trim Ring NOT included in kits

Note: 2" x 3" Top Rail can be used as Top Rail for any of the Vinyl Rail Kits

Residential Gates

Gates to match any of our Rails!

36" tall Rail Gates - Vinyl Square Balusters

Item Number White Vinyl	Item Number Almond Vinyl	Item Number Khaki Vinyl	Item Description
GATESQPIC3636-W	GATESQPIC3636-A	GATESQPIC3636-K	GATE 36" X 36" SQ BALUSTERS
GATESQPIC4236-W	GATESQPIC4236-A	GATESQPIC4236-K	GATE 42" X 36" SQ BALUSTERS
GATESQPIC4836-W	GATESQPIC4836-A	GATESQPIC4836-K	GATE 48" X 36" SQ BALUSTERS
GDR-B			GATE DROP ROD KIT (for double-gates)
GHK-B			S. Steel - Self Closing Hinge (Blk)
GLK-B			S. Steel - Two Way Latch (Blk)



36" tall Rail Gates - Vinyl Turn Balusters

Item Number White Vinyl	Item Number Almond Vinyl	Item Number Khaki Vinyl	Item Description
GATETRNPIC3636-W	GATETRNPIC3636-A	GATETRNPIC3636-K	GATE 36" X 36" TURN BALUSTERS
GATETRNPIC4236-W	GATETRNPIC4236-A	GATETRNPIC4236-K	GATE 42" X 36" TURN BALUSTERS
GATETRNPIC4836-W	GATETRNPIC4836-A	GATETRNPIC4836-K	GATE 48" X 36" TURN BALUSTERS
GDR-B			GATE DROP ROD KIT (for double-gates)
GHK-B			S. Steel - Self Closing Hinge (Blk)
GLK-B			S. Steel - Two Way Latch (Blk)

Gates to Match Railing!

Gates come assembled and widths cut as needed with NO additional charge

36" tall Rail Gates - Round Black Aluminum Powder Coat Balusters

Item Number White Vinyl	Item Number Almond Vinyl	Item Number Khaki Vinyl	Item Description
GATEPCPIC3636-W	GATEPCPIC3636-A	GATEPCPIC3636-K	GATE 36" X 36" ALUM ROUND BLACK BALUSTERS
GATEPCPIC4236-W	GATEPCPIC4236-A	GATEPCPIC4236-K	GATE 42" X 36" ALUM ROUND BLACK BALUSTERS
GATEPCPIC4836-W	GATEPCPIC4836-A	GATEPCPIC4836-K	GATE 48" X 36" ALUM ROUND BLACK BALUSTERS
GDR-B			GATE DROP ROD KIT (for double-gates)
GHK-B			S. Steel - Self Closing Hinge (Blk)
GLK-B			S. Steel - Two Way Latch (Blk)

36" tall Rail Gates - Square Black Aluminum Powder Coat Balusters

Item Number White Vinyl	Item Number Almond Vinyl	Item Number Khaki Vinyl	Item Description
GATEPCSQ3636-W	GATEPCSQ3636-A	GATEPCSQ3636-K	GATE 36" X 36" ALUM SQUARE BLACK BALUSTERS
GATEPCSQ4236-W	GATEPCSQ4236-A	GATEPCSQ4236-K	GATE 42" X 36" ALUM SQUARE BLACK BALUSTERS
GATEPCSQ4836-W	GATEPCSQ4836-A	GATEPCSQ4836-K	GATE 48" X 36" ALUM SQUARE BLACK BALUSTERS
GDR-B			GATE DROP ROD KIT (for double-gates)
GHK-B			S. Steel - Self Closing Hinge (Blk)
GLK-B			S. Steel - Two Way Latch (Blk)

Gates come assembled.
Hardware not included in kits but sold separately.

Commercial Railing Kits - Vinyl

Vinyl Rail Kits - 42" tall Straight and Stair Rail Kits with Top T-Rail, 2" x 3 1/2" Bottom Rail and Square Balusters

Item Number White	Item Number Almond	Item Number Khaki	Item Description
TVR4F-CS-W	TVR4F-CS-A	TVR4F-CS-K	4' FLAT RAIL COMMERCIAL RAIL
TVR6F-CS-W	TVR6F-CS-A	TVR6F-CS-K	6' FLAT RAIL COMMERCIAL RAIL
TVR8F-CS-W	TVR8F-CS-A	TVR8F-CS-K	8' FLAT RAIL COMMERCIAL RAIL
TVR10F-CS-W	TVR10F-CS-A	TVR10F-CS-K	10' FLAT RAIL COMMERCIAL RAIL
TVR4S-CS-W	TVR4S-CS-A	TVR4S-CS-K	4' STAIR RAIL COMMERCIAL RAIL
TVR6S-CS-W	TVR6S-CS-A	TVR6S-CS-K	6' STAIR RAIL COMMERCIAL RAIL
TVR8S-CS-W	TVR8S-CS-A	TVR8S-CS-K	8' STAIR RAIL COMMERCIAL RAIL



Kits Include:

- Top T-Rail with Alum Insert
- Bottom 2" x 3 1/2" Rail with Aluminum Insert
- 1 1/2" x 1 1/2" Square Balusters
- top and bottom brackets
- bracket screws and screw covers
- support picket in kits over 4'

ALL COMMERCIAL RAILING KITS HAVE ALUMINUM INSERT IN TOP AND BOTTOM RAIL

Post, Post Cap and Trim Ring NOT included in kits

Commercial Railing Gates - Vinyl

42" Rail Gates - Vinyl Square Balusters

Item Number White	Item Number Almond	Item Number Khaki	Item Description
GATESQPIC3642-W	GATESQPIC3642-A	GATESQPIC3642-K	COMMERCIAL GATE 36" X 42"
GATESQPIC4242-W	GATESQPIC4242-A	GATESQPIC4242-K	COMMERCIAL GATE 42" X 42"
GATESQPIC4842-W	GATESQPIC4842-A	GATESQPIC4842-K	COMMERCIAL GATE 48" X 42"
GDR-B			GATE DROP ROD KIT
GHK-B			GATE HINGE KIT
GLK-B			GATE LATCH KIT



Gates come assembled.
Hardware not included in kits but sold separately.

Post Sleeves - Vinyl

Item Number White	Item Number Almond	Item Number Khaki	Item Description
4TVRP-38-W	4TVRP-38-A	4TVRP-38-K	4" X 4" X 38" VINYL SLEEVE
4TVRP-42-W	4TVRP-42-A	4TVRP-42-K	4" X 4" X 42" VINYL SLEEVE
4TVRP-48-W	4TVRP-48-A	4TVRP-48-K	4" X 4" X 48" VINYL SLEEVE
4TVRP-60-W	4TVRP-60-A	4TVRP-60-K	4" X 4" X 60" VINYL SLEEVE
4TVRP-72-W	4TVRP-72-A	4TVRP-72-K	4" X 4" X 72" VINYL SLEEVE
4TVRP-96-W	4TVRP-96-A	4TVRP-96-K	4" X 4" X 96" VINYL SLEEVE
4TVRP-120-W	4TVRP-120-A	4TVRP-120-K	4" X 4" X 120" VINYL SLEEVE
4TVRP-144-W	4TVRP-144-A	4TVRP-144-K	4" X 4" X 144" VINYL SLEEVE
4TVRP-192-W	4TVRP-192-A	4TVRP-192-K	4" X 4" X 192" VINYL SLEEVE
5TVRP-96-W	n/a	n/a	5" X 5" X 96" VINYL SLEEVE
5TVRP-108-W	5TVRP-108-A	n/a	5" X 5" X 108" VINYL SLEEVE
6TVRP-120-W	6TVRP-120-A	6TVRP-120-K	6" X 6" X 120" VINYL SLEEVE

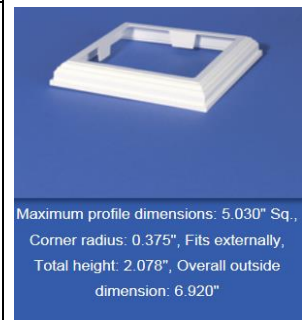
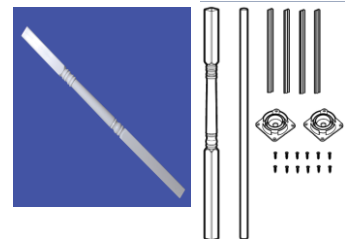


Vinyl Sleeves to fit over
4"x 4", 5"x 5" or 6"x 6" Posts

Structured Porch Post - Vinyl

Item Number White	Item Number Almond	Item Number Khaki	Item Description
5TVRPP-5-108-W	5TVRPP-5-108-A	5TVRPP-5-108-K	5" X 5" X 108" STRUCTURE PORCH POST
5TVRPP-TRIM RING	n/a	n/a	5" PORCH POST TRIM RING

Kit includes vinyl post, aluminum insert,
mounts and screws



Post Supports and Hardware

Item Number			Item Description
TVRAPS-4			ADJ POST MOUNT 4" Sq. BluMt - 36"
TVRAPS-5			ADJ POST MOUNT 5" Sq. BluMt - 42"
TVRAPS-4GALV			ADJ POST MOUNT 4"Sq. Galvanized Adjustable to 36" or 42" Height
TVRAPS-6ADJ			6" ADJ FIT OVER 4" ADJ POST MOUNT



For use with 4" Sq. Post O.D. 3.568",
Includes: (1) ea. mount, (2) ea. PVC
Guides Does not include mounting
hardware, (U.S. Patent #7530550)



For use with 5" Sq. Post O.D. 4.568",
Includes: (1) ea. mount, (2) ea. PVC
Guides Does not include mounting
hardware, (U.S. Patent #7530550)



36" Post Mount General Purpose w/ 4"
PVC Guides For use with a 36" Railing
galvanized mount, (2) ea. PVC Guides
and (2) ea. shims. Independently tested to
meet ACC174, (U.S. Patent #7530550)



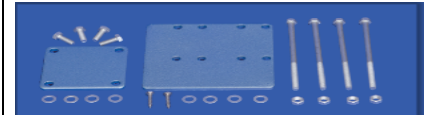
Designed to adapt any LMT 4" post mount
guide to work with a 6" post sleeve,

Post Supports and Hardware

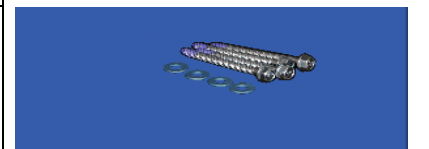
Item Number			Item Description
TVRAPSMK-C			CONCRETE MOUNT HARDWARE for Blu-Mount Post Mount
TVRAPSMK-W			WOOD MOUNT HARDWARE for Blu-Mount Post Mount
TVRAPSANCH_CONCRETE			Anchor Bolt Kit - Concrete (works with any of the post mounts)



Blu-Mount™ is a post surface mount designed for installing a 4" and 5" post to concrete, wood and composite decking. Blu-Mount™ is designed with an adjustable leveling feature to ensure accurate installation. They are made from Q235 steel with a Dachromate coating for superior rust prevention in even the most severe environments. The aluminum guides are made from 6063 T5 Aluminum alloy. Both the aluminum and PVC guides are designed to function with all wall thickness of 4" and 5" post profiles.



Blu-Mount™ is a post surface mount designed for installing a 4" and 5" post to concrete, wood and composite decking. Blu-Mount™ is designed with an adjustable leveling feature to ensure accurate installation. They are made from Q235 steel with a Dachromate coating for superior rust prevention in even the most severe environments. The aluminum guides are made from 6063 T5 Aluminum alloy. Both the aluminum and PVC guides are designed to function with all wall thickness of 4" and 5" post profiles.



(4) ea.- 1/4 x 3" Powers Wedge Bolts, (4) ea. - 5/16 Flat Washer & (1) ea.- Post

Cladding (Post Wrap)

Item Number White	Item Number Almond	Item Number Khaki	Item Description
TVRCC4-10	n/a	n/a	4" SQ SMOOTH COLUMN CLADDING (POST WRAP) 10' IN LENGTH - 4 PIECES
TVRCC6-10	n/a	n/a	6" SQ SMOOTH COLUMN CLADDING (POST WRAP) 10' IN LENGTH - 4 PIECES
TVRCC-4" BASE MOLD	n/a	n/a	4" SQ COLUMN CLADDING BASE MOLDING
TVRCC-6" BASE MOLD	n/a	n/a	6" SQ COLUMN CLADDING BASE MOLDING
TVRCC-4" POST CAP	n/a	n/a	4" SQ COLUMN CLADDING POST CAP
TVRCC-6" POST CAP	n/a	n/a	6" COLUMN CLADDING POST CAP



Base Molding not included with Cladding



***Cladding Only Available in White ***

Post Caps - Vinyl

Item Number White	Item Number Almond	Item Number Khaki	Item Description	
4TVRPC-FLAT CAP-W	4TVRPC-FLAT CAP-A	4TVRPC-FLAT CAP-K	4" SQ FLAT CAP	 <p>Maximum profile dimensions: 4.025" Sq., Corner radius: 0.125" Extends 0.450" over the profile Total height: 1.250"</p>
5TVRPC-FLAT CAP-W	5TVRPC-FLAT CAP-A	5TVRPC-FLAT CAP-K	5" SQ FLAT CAP	 <p>Maximum profile dimensions 5.020" Sq., Corner radius: 0.188", Extends 1.000" over the profile, Total height: 1.750"</p>
6TVRPC-FLAT CAP-W	6TVRPC-FLAT CAP-A	6TVRPC-FLAT CAP-K	6" SQ FLAT CAP	 <p>Maximum profile dimensions 6.020" Sq., Corner radius: 0.125", Extends 0.920" over the profile, Total height: 1.900"</p>
4TVRPC-NEWENGLAND-W	4TVRPC-NEWENGLAND-A	4TVRPC-NEWENGLAND-K	4" SQ New England Post Cap	 <p>Maximum profile dimensions 4.010" Sq., Corner radius: 0.125", Extends 1.600" over the profile, Total height: 2.250" See</p>
5TVRPC-NEWENGLAND-W	5TVRPC-NEWENGLAND-A	5TVRPC-NEWENGLAND-K	5" SQ New England Post Cap	 <p>Maximum profile dimensions 5.010" Sq., Corner radius: 0.125", Extends 1.600" over the profile, Total height: 2.250" See</p>
6TVRPC-NEWENGLAND-W	6TVRPC-NEWENGLAND-A	6TVRPC-NEWENGLAND-K	6" SQ New England Post Cap	 <p>Maximum profile dimensions 6.010" Sq., Corner radius: 0.180", Extends 0.920" over the profile, Total height: 1.906" See</p>

Post Caps - Vinyl

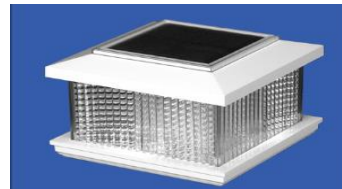
Item Number White	Item Number Almond	Item Number Khaki	Item Description
4TVRPC-GOTHIC-W	4TVRPC-GOTHIC-A	4TVRPC-GOTHIC-K	4" Sq Gothic Post Cap
5TVRPC-GOTHIC-W	5TVRPC-GOTHIC-A	5TVRPC-GOTHIC-K	5" Sq Gothic Post Cap
4TVRPC-SOLAR-W	n/a	n/a	Galaxy Solar Post Cap - Fit 4" or 5" Sq.
4TVRPC-POSTBALL-W	4TVRPC-POSTBALL-A	4TVRPC-POSTBALL-K	4" Sq Ball Post Cap



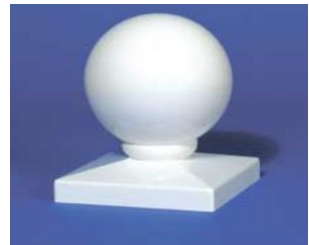
Maximum profile dimensions 4.010" Sq.,
Corner radius: 0.188", Extends 1.350"
over the profile, Total height: 7.750"



Maximum profile dimensions 5.010" Sq.,
Corner radius: 0.125", Extends 1.600"
over the profile, Total height: 9.625"



Fits externally over 4" Sq." or 5" Sq. post,
4" Sq. solar panel, Dual NiCad
rechargeable batteries, 4 ea. LED lights,
Up to 12 hours of light, Includes adapter
for use with 4" posts, 3-1/2" post adapter
available separately for 3-1/2" PVC post
or 4" Sq. wood post, (US Patent #
6,722,637)



Maximum profile dimensions 4.025" Sq.,
Corner radius: Square, Extends 0.680"
over the profile, Dome diameter: 3.818",
Total height: 5.000"

Post Caps - Vinyl

Item Number White	Item Number Almond	Item Number Khaki	Item Description
n/a	n/a	4TVRPC-FEDERATION-K	4" Sq Federation Post Cap
6TVRPC-FEDERATION-W	n/a	n/a	6" Sq Federation Post Cap
4TVRPC-INTERNAL-W	N/A	N/A	4" INTERNAL POST CAP



Maximum profile dimensions 4.010" Sq.,
Corner radius: 0.125", Extends 1.500"
over the profile, Total height: 3.363" See



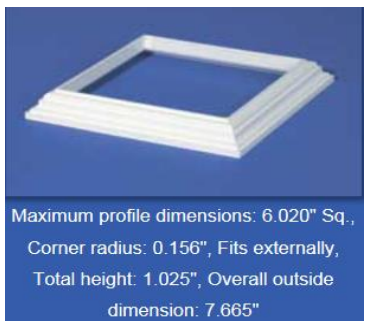
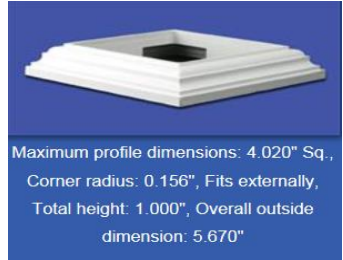
Maximum profile dimensions 6.020" Sq.,
Corner radius: 0.135", Extends 1.500"
over the profile, Total height: 3.613", Over
all outside dimension: 9.312" See our



Minimum profile inside dimensions 3.675"
Sq., Extends 0.750" into the profile,
Corner radius: 0.250", Total height: 1.500"

Post Trim Rings - Vinyl

Item Number White	Item Number Almond	Item Number Khaki	Item Description
4TVRPTC-TRIMRING-W	4TVRPTC-TRIMRING-A	4TVRPTC-TRIMRING-K	4" Sq Low Profile POST TRIM RING
4TVRPTC-TRIM2PC-W	4TVRPTC-TRIM2PC-A	4TVRPTC-TRIM2PC-K	4" Sq POST TRIM RING (2 Piece)
5TVRPTC-TRIM2PC-W	5TVRPTC-TRIM2PC-A	5TVRPTC-TRIM2PC-K	5" Sq POST TRIM RING (2 Piece)
6TVRPTC-TRINGRING-W	6TVRPTC-TRINGRING-A	6TVRPTC-TRINGRING-K	6" Sq POST TRIM RING
6TVRPTC-TRIM2PC-W	6TVRPTC-TRIM2PC-A	6TVRPTC-TRIM2PC-K	6" Sq POST TRIM RING(2 Piece)

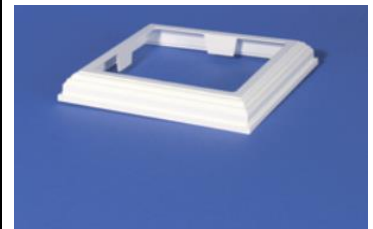


Post Trim Rings - Vinyl

Item Number White	Item Number Almond	Item Number Khaki	Item Description
6TVRPTC-FEDERATION-W	6TVRPTC-FEDERATION-A	n/a	6" Sq Federation TRIM RING (2PC)
5TVRPP-TRIM RING	n/a	n/a	5" Sq PORCH POST TRIM RING
4TVRPTADJ3-6.5	n/a	n/a	#N/A



Maximum profile dimensions: 6.020" Sq.,
Corner radius: 0.156", Fits externally,
Total height: 2.460", Overall outside
dimension: 9.375"



Maximum profile dimensions: 5.030" Sq.,
Corner radius: 0.375", Fits externally,
Total height: 2.078", Overall outside
dimension: 6.920"

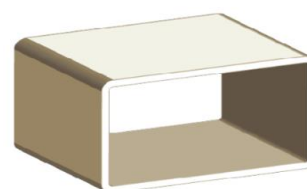


Designed to fit 3" to a 6-1/2" Posts.
Adjustable Outside Dimension, Corner
radius: 0.256", Fits externally, Total
height: 1.226"

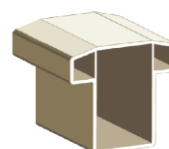
Vinyl Rails - Individual Replacement Rails

Item Number White	Item Number Almond	Item Number Khaki	Item Description
2 X 3.5 X 1' RAIL NR	2 X 3.5 X 1' RAIL NR-A	2 X 3.5 X 1' RAIL NR-K	2" X 3.5" X 1' RAIL NOT ROUTED
2 X 3.5 X 1' RAIL R	2 X 3.5 X 1' RAIL R-A	2 X 3.5 X 1' RAIL R-K	2" X 3.5" X 1' RAIL ROUTED
2 X 3.5 X 2' RAIL NR	2 X 3.5 X 2' RAIL NR-A	2 X 3.5 X 2' RAIL NR-K	2" X 3.5" X 2' RAIL NOT ROUTED
2 X 3.5 X 2' RAIL R	2 X 3.5 X 2' RAIL R-A	2 X 3.5 X 2' RAIL R-K	2" X 3.5" X 2' RAIL ROUTED
2 X 3.5 X 3' RAIL NR	2 X 3.5 X 3' RAIL NR-A	2 X 3.5 X 3' RAIL NR-K	2" X 3.5" X 3' RAIL NOT ROUTED
2 X 3.5 X 3' RAIL R	2 X 3.5 X 3' RAIL R-A	2 X 3.5 X 3' RAIL R-K	2" X 3.5" X 3' RAIL ROUTED
2 X 3.5 X 4' RAIL NR	2 X 3.5 X 4' RAIL NR-A	2 X 3.5 X 4' RAIL NR-K	2" X 3.5" X 4' RAIL NOT ROUTED
2 X 3.5 X 4' RAIL R	2 X 3.5 X 4' RAIL R-A	2 X 3.5 X 4' RAIL R-K	2" X 3.5" X 4' RAIL ROUTED
2 X 3.5 X 5 RAIL NR	2 X 3.5 X 5 RAIL NR-A	2 X 3.5 X 5 RAIL NR-K	2" X 3.5" X 5' RAIL NOT ROUTED
2 X 3.5 X 5' RAIL R	2 X 3.5 X 5' RAIL R-A	2 X 3.5 X 5' RAIL R-K	2" X 3.5" X 5' RAIL ROUTED
2 X 3.5 X 6' RAIL NR	2 X 3.5 X 6' RAIL NR-A	2 X 3.5 X 6' RAIL NR-K	2" X 3.5" X 6' RAIL NOT ROUTED
2 X 3.5 X 6' RAIL R	2 X 3.5 X 6' RAIL R-A	2 X 3.5 X 6' RAIL R-K	2" X 3.5" X 6' RAIL ROUTED
2 X 3.5 X 7' RAIL NR	2 X 3.5 X 7' RAIL NR-A	2 X 3.5 X 7' RAIL NR-K	2" X 3.5" X 7' RAIL NOT ROUTED
2 X 3.5 X 7' RAIL R	2 X 3.5 X 7' RAIL R-A	2 X 3.5 X 7' RAIL R-K	2" X 3.5" X 7' RAIL ROUTED
2 X 3.5 X 8' RAIL NR	2 X 3.5 X 8' RAIL NR-A	2 X 3.5 X 8' RAIL NR-K	2" X 3.5" X 8' RAIL NOT ROUTED
2 X 3.5 X 8' RAIL R	2 X 3.5 X 8' RAIL R-A	2 X 3.5 X 8' RAIL R-K	2" X 3.5" X 8' RAIL ROUTED
2 X 3.5 X 9' RAIL NR	2 X 3.5 X 9' RAIL NR-A	2 X 3.5 X 9' RAIL NR-K	2" X 3.5" X 9' RAIL NOT ROUTED
2 X 3.5 X 9' RAIL R	2 X 3.5 X 9' RAIL R-A	2 X 3.5 X 9' RAIL R-K	2" X 3.5" X 9' RAIL ROUTED
2 X 3.5 X 10 RAIL NR	2 X 3.5 X 10 RAIL NR-A	2 X 3.5 X 10 RAIL NR-K	2" X 3.5" X 10' RAIL NOT ROUTED
2 X 3.5 X 10 RAIL R	2 X 3.5 X 10 RAIL R-A	2 X 3.5 X 10 RAIL R-K	2" X 3.5" X 10' RAIL ROUTED
2 X 3.5 X 12'RAIL NR	2 X 3.5 X 12'RAIL NR-A	2 X 3.5 X 12'RAIL NR-K	2" X 3.5" X 12' RAIL NOT ROUTED
2 X 3.5 X 12 RAIL R	2 X 3.5 X 12 RAIL R-A	2 X 3.5 X 12 RAIL R-K	2" X 3.5" X 12 RAIL ROUTED
2 X 3.5 X 16 RAIL NR	2 X 3.5 X 16 RAIL NR-A	2 X 3.5 X 16 RAIL NR-K	2" X 3.5" X 16' RAIL NOT ROUTED
2 X 3.5 X 16 RAIL R	2 X 3.5 X 16 RAIL R-A	2 X 3.5 X 16 RAIL R-K	2" X 3.5" X 16 RAIL ROUTED
T-RAIL NR-W	T-RAIL NR-A	T-RAIL NR-K	TOP RAIL ONLY NOT ROUTED
T-RAIL R-W	T-RAIL R-A	T-RAIL R-K	TOP RAIL ONLY ROUTED

**2" x 3½" RAIL
(0.120" WALL)
CORNER R 0.188"**



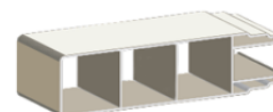
**3½" T-RAIL
(0.110" WALL)**



Routed Replacement Rails - Routed to match railing kits as needed.

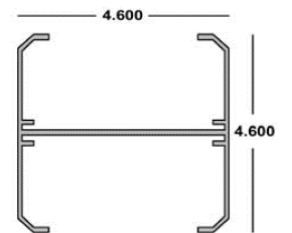
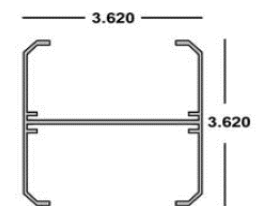
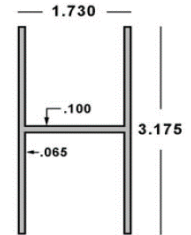
2X7X6-DECOPOCKET-W	2X7X6-DECOPOCKET-A	2X7X6-DECOPOCKET-K	2" X 7" X 6' DECO POCKET RAIL
2X7X8-DECOPOCKET-W	n/a	2X7X8-DECOPOCKET-K	2" X 7" X 8' DECO POCKET RAIL

2"x7" DECO POCKET RAIL



Aluminum Inserts

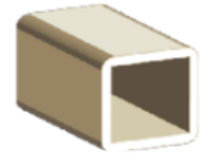
Item Number			Item Description
RAIL STIFFNER 2X3.5			ALUMINUM RAIL STIFFENER FOR 2" X 3 1/2" RAILS
RAIL STIFFENER 4 INCH			ALUMINUM STIFFENER FOR 4" SQ POSTS
POST STIFFNER 5 INCH			ALUMINUM STIFFENER FOR 5" SQ POSTS



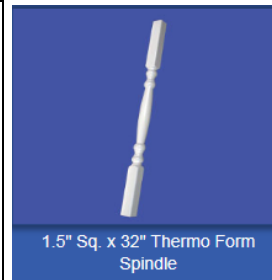
Replacement Balusters

Item Number White	Item Number Almond	Item Number Khaki	Item Description
PICKET SQUARE32-W	PICKET SQUARE32-A	PICKET SQUARE32-K	1 1/2" Square x 32" Vinyl Baluster
PICKET TURNED-W	PICKET TURNED-A	PICKET TURNED-K	1 1/2" Sq Turned-Style 32" Baluster

1½" x 1½" PICKET






Custom Cuts Available



1.5" Sq. x 32" Thermo Form Spindle

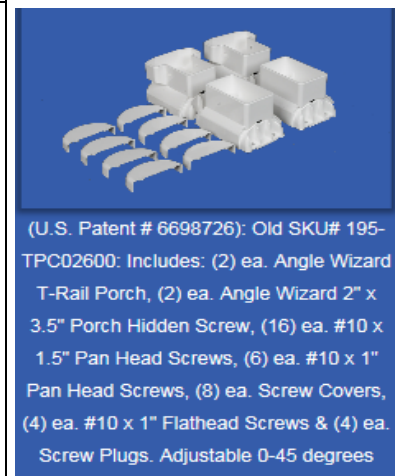
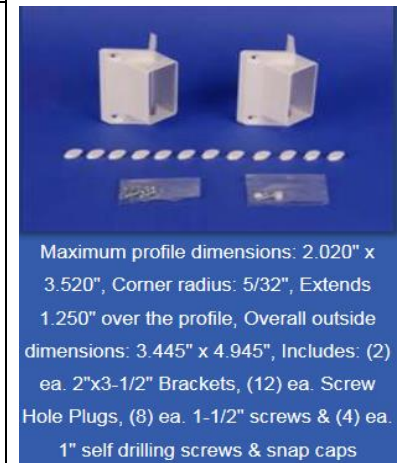
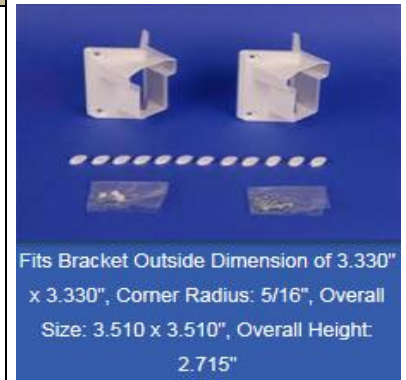
Item Number			Item Description
PICKET PC BLK RD-32	n/a	n/a	32" x 3/4" Smooth Finish Round Black Powder Coated Aluminum Baluster
PICKET PC BLK SQ-32	n/a	n/a	32" x 3/4" Smooth Finish Square Black Powder Coated Aluminum Baluster

Railing Brackets

Item Number White	Item Number Almond	Item Number Khaki	Item Description	
TVRBR-FBK-W	TVRBR-FBK-A	TVRBR-FBK-K	FLAT BRKT KIT (1TOP 1 BOT)	 <p>Includes: (1) ea. T-Rail Bracket, (1) ea. 2" x 3-1/2" Rail Bracket, (10) ea. #10 x 1-1/2" Phillips Pan Head Screws, (12) ea. PVC Screw Hole Plugs, (4) ea. Self Drilling Screws and caps & (1) ea. Instruction Sheet</p>
TVRBR-TSK-W	TVRBR-TSK-A	TVRBR-TSK-K	T-RAIL STAIR BRKT KIT (2 TOPS)	 <p>Corner radius: 5/32", Extends 1.250" over the profile, Overall outside dimensions: 3.731" x 5.000", Includes: (1) ea. T-Rail Stair Bracket Top, (1) ea. T-Rail Stair Bracket, Bottom, (12) ea. #10 x 1-1/2" Phillips Pan Head Stainless Steel Screws, (12) ea. PVC Screw Hole Plugs, (4) Self Drilling Screws and caps & (1) ea. Instruction Sheet (CAN BE USED FROM A 28 DEGREE TO 42 DEGREE ANGLE)</p>
TVRBR-BSK-W	TVRBR-BSK-A	TVRBR-BSK-K	BOTTOM STAIR BRKT KIT (2 BOTTOMS)	 <p>Maximum profile dimensions: 2.020" x 3.520", Corner radius: 5/32", Extends 1.250" over the profile, Overall outside dimensions: 3.445" x 4.945", Includes: (2) ea. 2" x 3-1/2" Stair Rail Brackets, (8) ea. #10 x 1-1/2" Phillips Pan Head Stainless Screws, (8) ea. PVC Screw Hole Plugs, (4) ea. Self Drilling Screws and caps & (1) ea. Instruction Sheet (CAN BE USED FROM A 28 DEGREE TO 42 DEGREE ANGLE)</p>

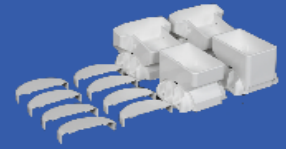
Railing Brackets

Item Number White	Item Number Almond	Item Number Khaki	Item Description
TVRBR-45-TRAIL	n/a	n/a	CORNER 45° T-RAIL HANDRAIL BRK KIT (2 pc)
TVRBR-45-2X3.5	n/a	n/a	CORNER 45° 2 X 3.5 HANDRAIL BRK KIT (2 pc)
TVRBR-ADJ-B-W	TVRBR-ADJ-B-A	TVRBR-ADJ-B-K	ADJ ANGLE BRK T-RAIL - STRAIGHT RAIL (4 pc)

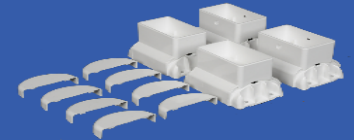


Railing Brackets

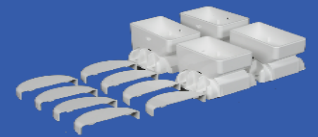
Item Number White	Item Number Almond	Item Number Khaki	Item Description
TVRBR-ADJ-T-W	TVRBR-ADJ-T-A	TVRBR-ADJ-T-K	ADJ ANGLE BRT - STAIR RAIL (4 pc)
TVBRK-RM2X3.5AW-H	n/a	n/a	*2" x 3.5" ANGLE WIZARD HORIZ PORCH BKT KIT - 4 BKTS
TVBRK-RM2X3.5AW-V	n/a	n/a	*2" x 3.5" ANGLE WIZARD VERTICAL STAIR BKT KIT - 4 BKTS



(U.S. Patent # 6698726): Old SKU# 195-TSC02500: Includes: (1) ea. Up & (1) ea. Down, Angle Wizard T-Rail Stair, (2) ea. Angle Wizard 2" x 3.5" Stair Hidden Screw, (16) ea. #10 x 1.5" Pan Head Screws, (6) ea. #10 x 1" Pan Head Screws, (8) ea. Screw Covers, (4) ea. #10 x 1" Flathead Screws & (4) ea. Screw Plugs. Adjustable 0-45 degrees



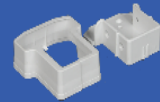
(U.S. Patent # 6698726): Old SKU# 195-PRC02600: Includes: (2) ea. Angle Wizard 2" x 3.5" Porch, (2) ea. Angle Wizard 2" x 3.5" Porch Hidden Screw, (16) ea. #10 x 1.5" Pan Head Screws, (6) ea. #10 x 1" Pan Head Screws, (8) ea. Screw Covers, (4) ea. #10 x 1" Flathead Screws & (4) ea. Screw Plugs. Adjustable 0-45 degrees



(U.S. Patent # 6698726): Old SKU# 195-SRC02500: Includes: (2) ea. Angle Wizard 2" x 3.5" Stair, (2) ea. Angle Wizard 2" x 3.5" Stair Hidden Screw, (16) ea. #10 x 1.5" Pan Head Screws, (6) ea. #10 x 1" Pan Head Screws, (8) ea. Screw Covers, (4) ea. #10 x 1" Flathead Screws & (4) ea. Screw Plugs. Adjustable 0-45 degrees

Railing Brackets

Item Number White	Item Number Almond	Item Number Khaki	Item Description
TVRBR-T-RAIL DROP IN	n/a	n/a	T-RAIL DROP IN BRACKET (1 pc)
TVRBRK-HR2X3.5KIT	TVRBRK-HR2X3.5KIT-A	TVRBRK-HR2X3.5KIT-K	2" X 3.5" BRACKET KIT (2 pc)



Patent Pending: Old SKU# 065-
TTA01200: (1) ea. T-Rail Porch Drop In,
(1) ea. T-Rail Porch Drop In Cover & (8)
ea. #12 x 1" Pan Head Screws



Includes: (2) ea. 2" x 3-1/2" Rail Brackets,
(8) ea. #10 X 1-1/2" Phillips Pan Head
Screws, (8) ea. PVC Screw Hole Plugs,
(4) ea. Self Drilling Screws and caps & (1)
ea. Instruction Sheet

Column Adapters

Item Number White	Item Number Almond	Item Number Khaki	Item Description
TVRBR-RCA-W	TVRBR-RCA-A	TVRBR-RCA-K	STRAIGHT RAILS ROUND COLUMN ADAPTER FOR 8" COLUMN
TVRBR-SRCA-W	TVRBR-SRCA-A	TVRBR-SRCA-K	STAIR RAILS ROUND COLUMN ADAPTER FOR 8" COLUMN

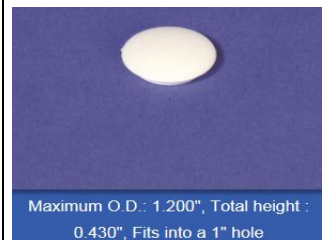
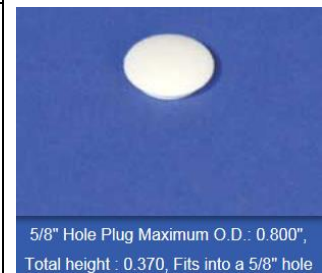
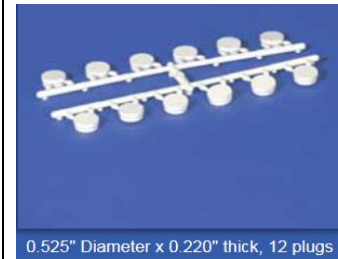
Designed for attaching rail bracket
to a 8" column



Bracket Plugs and Screws

Item Number White	Item Number Almond	Item Number Khaki	Item Description
SCREW/PLUG BRK KIT-W	SCREW/PLUG BRK KIT-A	SCREW/PLUG BRK KIT-K	Screws, Screw Covers, and Plugs needed for 2 Brackets
BRACKET PLUG TREE-W	BRACKET PLUG TREE-A	BRACKET PLUG TREE-K	.525" Diameter Bracket Plugs 12 on Tree
5/8 PLUG-W	5/8 PLUG-A	5/8 PLUG-K	5/8" Plug
SCREW CAPS-W	SCREW CAPS-A	SCREW CAPS-K	SCREW COVER - FITS SMALL BRACKET SCREWS
PLUG 1"-W	PLUG 1"-A	PLUG 1"-K	1" PLUG WHITE

Includes: (10) #10 x1 1/2" Phillips Pan Head Screws, (10) PVC Screw Hole Plugs, (4) each Self Drilling Screws and caps



Screws

Item Number			Item Description
SCREW 1" SS SELF DRI			BRACKET SCREW 1" STAINLESS STEEL SELF DRILLING
SCREW 1.5" SS SELF			BRACKET SCREW 1.5" STAINLESS STEEL SELF DRILLING
SCREW 1.5" SS SD WHI			SCREW 1.5" STAINLESS STEEL SELF DRILLING W/WHITE HEAD
SCREW 2 1/4 SS WHITE			SCREW 2 1/4" STAINLESS STEEL WHITE HEAD

Rail Mounts

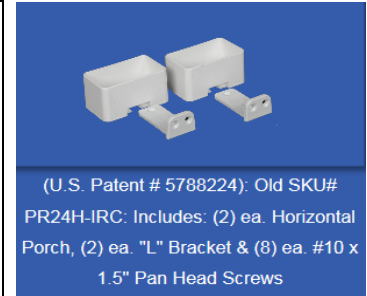
Item Number White	Item Number Almond	Item Number Khaki	Item Description
TVRBRK-EXT.1.5 x 5.5	TVRBRK-EXT.1.5 x 5.5-A	TVRBRK-EXT.1.5 x 5.5-K	1.5" x 5.5" EXTERNAL RAIL MOUNT BRACKET
TVRBRK-RM1.5X5	TVRBRK-RM1.5X5-A	TVRBRK-RM1.5X5-K	1.5" X 5.5" RAIL MOUNT BRACKET
TVRBRK-RM2X3.5	TVRBRK-RM2X3.5-A	TVRBRK-RM2X3.5-K	2" X 3.5" EXTERNAL RAIL MOUNT BRACKET
TVRBRK-RM2X3.5	TVRBRK-RM2X3.5-A	TVRBRK-RM2X3.5-K	2" X 3.5" SCREEN PORCH RAIL BRACKET



Screws are NOT Included with Mounts

Rail Mounts

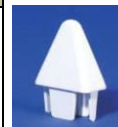
Item Number White	Item Number Almond	Item Number Khaki	Item Description
TVRBRK-RM2X3.5KIT-W	n/a	n/a	*2" x 3.5" PORCH RAIL MOUNT BRACKET KIT - 2 BKTS
TVRBRK- EXT. 2 x 6	TVRBRK- EXT. 2 x 6-A	TVRBRK- EXT. 2 x 6-K	2" X 6" EXTERNAL RAIL MOUNT BRACKET
TVRBRK-RM2X6	TVRBRK-RM2X6-A	TVRBRK-RM2X6-K	2" X 6" RAIL MOUNT BRACKET



Screws are NOT Included with Mounts

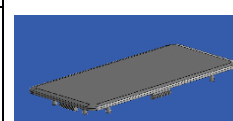
Picket Caps - Vinyl

Item Number White	Item Number Almond	Item Number Khaki	Item Description
TVRPC-7/8x1.5 SPC-W	TVRPC-7/8x1.5 SPC-A	TVRPC-7/8x1.5 SPC-K	7/8x1.5 SHARP PIC CAP
TVRPC-7/8X3DEPC-W	TVRPC-7/8X3DEPC-A	TVRPC-7/8X3DEPC-K	7/8X3 Dog Ear Picket Cap
TVRPC-7/8X3SPC-W	TVRPC-7/8X3SPC-A	TVRPC-7/8X3SPC-K	7/8X3 SHARP PICKET CAP
1.5-TVRPC-PICK CAP-W	1.5-TVRPC-PICK CAP-A	1.5-TVRPC-PICK CAP-K	1.5" Square Picket Cap
TVRC-DOG EAR-W	TVRC-DOG EAR-A	TVRC-DOG EAR-K	7/8 X 6 DOG EAR END CAP



Rail Caps - Vinyl

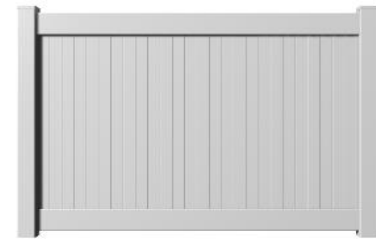
Item Number White	Item Number Almond	Item Number Khaki	Item Description
RC1.5x5.5ENDCINT-W	RC1.5x5.5ENDCINT-A	RC1.5x5.5ENDCINT-K	1.5X5.5 END CAP INTERNAL
RC1.75X3.5HC-W	RC1.75X3.5HC-A	RC1.75X3.5HC-K	1.75X3.5 ROUTED HOLE COVER
2 x 3.5 End Cap-W	2 x 3.5 End Cap-A	2 x 3.5 End Cap-K	2 x 3.5 End Cap
TVR-RAILCAP-2X6-W	TVR-RAILCAP-2X6-A	TVR-RAILCAP-2X6-K	2 X 6 RAIL CAP



Vinyl Privacy Fence and Matching Gates

Tahoe I - Straight Rail with Tongue & Groove Pickets

Item Number White	Item Description
TAH 48 X 72	TAHOE (4' Tall) 4' X 6' Section
TAH 48 X 96	TAHOE (4' Tall) 4' X 8' Section
TAH 60 X 72	TAHOE (5' Tall) 5' X 6' Section
TAH 60 X 96	TAHOE (5' Tall) 5' X 8' Section
TAH 72 X 72	TAHOE (6' Tall) 6' X 6' Section
TAH 72 X 96	TAHOE (6' Tall) 6' X 8' Section
TAH 84 X 96	TAHOE (7' Tall) 7' X 8' Section



Tahoe I Privacy Fence

This style is Rackable.

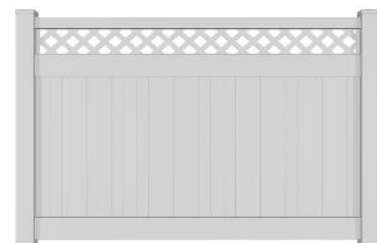
TAH36X60GATE	TAHOE (5' Tall) 36" X 60" GATE
TAH48X60GATE	TAHOE (5' Tall) 48" X 60" GATE
TAH60X60GATE	TAHOE (5' Tall) 60" X 60" GATE
TAH36X72GATE	TAHOE (6' Tall) 36" X 72" GATE
TAH48X72GATE	TAHOE (6' Tall) 48" X 72" GATE
TAH60X72GATE	TAHOE (6' Tall) 60" X 72" GATE
TAH72X72GATE	TAHOE (6' Tall) 72" X 72" GATE

Fence Sections Include:

- Top and Bottom Rail
- 6" T&G Pickets
- (2) U-Channels
- Routed 5" Sq. Post (2' taller than fence)
- 5" Sq. Post Cap

Tahoe III - Straight Rail with Tongue & Groove Pickets and Lattice

Item Number White	Item Description
TAH III 60 X 72	TAHOE III (5' Tall) 5' x 6' Section FENCE/LATTIC
TAH III 60 X 96	TAHOE III (5' Tall) 5' x 8' Section FENCE/LATTIC
TAH III 72 X 72	TAHOE III (6' Tall) 6' X 6' Section FENCE/LATTIC
TAH III 72 X 96	TAHOE III (6' Tall) 6' x 8' Section FENCE/LATTIC



Tahoe III Privacy Fence

This style is Rackable.

TAH III 36 X 60 GATE	TAHOE III (5' Tall) 36" X 60" GATE
TAH III 48 X 60 GATE	TAHOE III (5' Tall) 48" X 60" GATE
TAH III 60 X 60 GATE	TAHOE III (5' Tall) 60" X 60" GATE
TAH III 36 X 72 GATE	TAHOE III (6' Tall) 36" X 72" GATE
TAH III 48 X 72 GATE	TAHOE III (6' Tall) 48" X 72" GATE
TAH III 60 X 72 GATE	TAHOE III (6' Tall) 60" X 72" GATE
TAH III 72 X 72 GATE	TAHOE III (6' Tall) 72" X 72" GATE
TAH POST AND CAP	TAHOE POST AND CAP - 5" Sq.
GDR-B	GATE DROP ROD KIT - needed for double gates
GHK-B	GATE HINGE KIT - Self-Closing
GLK-B	GATE LATCH KIT - 2-Way Latch

Fence Section Includes:

- Top and Bottom Rail
- 6" T&G Pickets
- Mid-Rail and Lattice
- (2) U-Channels
- Routed 5" Sq. Post (2' taller than fence)
- 5" Sq. Post Cap

All Post are routed as needed - Line Posts, Corner Posts or End Posts

Gates come Assembled and Width Cut as needed with NO Additional Charge

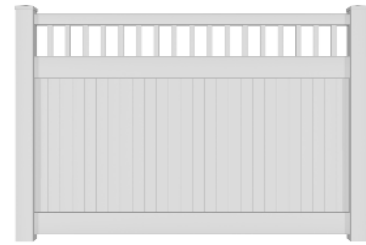
Hardware NOT Included with Gates but Sold Separately

Call for Availability in Almond and Khaki

Vinyl Privacy Fence and Matching Gates

Tahoe IV - Closed Top, Straight Rail with Tongue & Groove Pickets

Item Number White	Item Description
TAH IV 60 X 72	TAHOE IV (5' Tall) 5' X 6' Section
TAH IV 60 X 96	TAHOE IV (5' Tall) 5' X 8' Section
TAH IV 72 X 72	TAHOE IV (6' Tall) 6' X 6' Section
TAH IV 72 X 96	TAHOE IV (6' Tall) 6' X 8' Section



Tahoe IV Privacy Fence

This style is Rackable.

TAH IV 36 X 60 GATE	TAHOE IV (5' Tall) 36" X 60" GATE
TAH IV 48 X 60 GATE	TAHOE IV (5' Tall) 48" X 60" GATE
TAH IV 60 X 60 GATE	TAHOE IV (5' Tall) 60" X 60" GATE
TAH IV 36 X 72 GATE	TAHOE IV (6' Tall) 36" X 72" GATE
TAH IV 48 X 72 GATE	TAHOE IV (6' Tall) 48" X 72" GATE
TAH IV 60 X 72 GATE	TAHOE IV (6' Tall) 60" X 72" GATE
TAH IV 72 X 72 GATE	TAHOE IV (6' Tall) 72" X 72" GATE
TAH POST AND CAP	TAHOE POST AND CAP - 5" Sq.
GDR-B	GATE DROP ROD KIT - needed for double gates
GHK-B	GATE HINGE KIT - Self-Closing
GLK-B	GATE LATCH KIT - 2-Way Latch

Fence Section Includes:

- Top and Bottom Rail
- 6" T&G Pickets
- Mid-Rail and top Pickets
- (2) U-Channels
- Routed 5" Sq. Post (2' taller than fence)
- 5" Sq. Post Cap

All Post are routed as needed - Line Posts, Corner Posts or End Posts

Gates come Assembled and Width Cut as needed with NO Additional Charge

Hardware NOT Included with Gates but Sold Separately

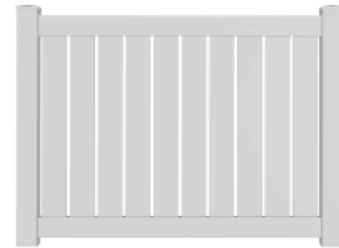
Call for Availability in Almond and Khaki

Vinyl Semi-Privacy Fence and Matching Gates

Thoreau - Semi-Privacy with 6" Pickets

Item Number White	Item Description
THOREAU 48 X 72	THOREAU (4' Tall) 4' X 6' Section
THOREAU 60 X 72	THOREAU (5' Tall) 5' X 6' Section
THOREAU 72 X 72	THOREAU (6' Tall) 6' X 6' Section

THOREAU 36 X 48 GATE	THOREAU (4' Tall) 36" X 48" GATE
THOREAU 48 X 48 GATE	THOREAU (4' Tall) 48" X 48" GATE
THOREAU 60 X 48 GATE	THOREAU (4' Tall) 60" X 48" GATE
THOREAU 36 X 60 GATE	THOREAU (5' Tall) 36" X 60" GATE
THOREAU 48 X 60 GATE	THOREAU (5' Tall) 48" X 60" GATE
THOREAU 60 X 60 GATE	THOREAU (5' Tall) 60" X 60" GATE
THOREAU 36 X 72 GATE	THOREAU (6' Tall) 36" X 72" GATE
THOREAU 48 X 72 GATE	THOREAU (6' Tall) 48" X 72" GATE
THOREAU 60 X 72 GATE	THOREAU (6' Tall) 60" X 72" GATE



This style is Rackable.

Fence Section Includes:

- Top and Bottom Rail
- 7/8" X 6" Pickets
- Mid-Rail for 5' and 6' tall fence
- Routed 5" Sq. Post (2' taller than fence)

All Post are routed as needed - Line Posts, Corner Posts or End Posts

Gates come Assembled and Width Cut as needed with NO Additional Charge

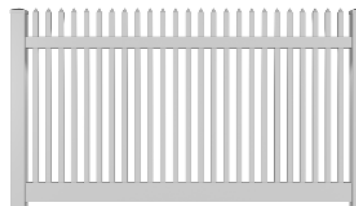
Hardware NOT Included with Gates but Sold Separately

Call for Availability in Almond and Khaki

Vinyl Picket Fence and Matching Gates

Fairmont I (Ashbery IV) - Picket Fence with 7/8" X 1 1/2" Pickets

Item Number White	Item Description
FAIR I 36 X 72	FAIRMONT I (3' Tall) 3' X 6' Section
FAIR I 48 X 72	FAIRMONT I (4' Tall) 4' X 6' Section
FAIR I 60 X 72	FAIRMONT I (5' Tall) 5' X 6' Section
FAIR I 72 X 72	FAIRMONT I (6' Tall) 6' X 6' Section



This style is Rackable.

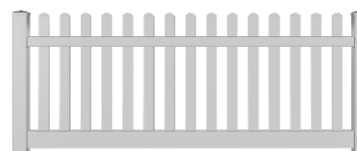
FAIR I 36 X 36 GATE	FAIRMONT I (3' Tall) 36" X 36" GATE
FAIR I 48 X 36 GATE	FAIRMONT I (3' Tall) 48" X 36" GATE
FAIR I 60 X 36 GATE	FAIRMONT I (3' Tall) 60" X 36" GATE
FAIR I 36 X 48 GATE	FAIRMONT I (4' Tall) 36" X 48" GATE
FAIR I 48 X 48 GATE	FAIRMONT I (4' Tall) 48" X 48" GATE
FAIR I 60 X 48 GATE	FAIRMONT I (4' Tall) 60" X 48" GATE
FAIR I 36 X 60 GATE	FAIRMONT I (5' Tall) 36" X 60" GATE
FAIR I 48 X 60 GATE	FAIRMONT I (5' Tall) 48" X 60" GATE
FAIR I 60 X 60 GATE	FAIRMONT I (5' Tall) 60" X 60" GATE
FAIR I 36 X 72 GATE	FAIRMONT I (6' Tall) 36" X 72" GATE
FAIR I 48 X 72 GATE	FAIRMONT I (6' Tall) 48" X 72" GATE
FAIR I 60 X 72 GATE	FAIRMONT I (6' Tall) 60" X 72" GATE

Fence Section Includes:

- Top and Bottom Rail
- 7/8" X 1 1/2" Pickets
- Routed 4" Sq. Post (2' taller than Fence)
- 4" Sq. Post Cap

Fairmont II (Ashbery I) - Picket Fence with 7/8" X 3" Pickets

Item Number White	Item Description
FAIR II 36 X 72	FAIRMONT II (3' Tall) 3' X 6' Section
FAIR II 48 X 72	FAIRMONT II (4' Tall) 4' X 6' Section
FAIR II 60 X 72	FAIRMONT II (5' Tall) 5' X 6' Section
FAIR II 72 X 72	FAIRMONT II (6' Tall) 6' X 6' Section



This style is Rackable.

FAIR II 36 X 36 GATE	FAIRMONT II (3' Tall) 36" X 36" GATE
FAIR II 48 X 36 GATE	FAIRMONT II (3' Tall) 48" X 36" GATE
FAIR II 60 X 36 GATE	FAIRMONT II (3' Tall) 60" X 36" GATE
FAIR II 36 X 48 GATE	FAIRMONT II (4' Tall) 36" X 48" GATE
FAIR II 48 X 48 GATE	FAIRMONT II (4' Tall) 48" X 48" GATE
FAIR II 60 X 48 GATE	FAIRMONT II (4' Tall) 60" X 48" GATE
FAIR II 36 X 60 GATE	FAIRMONT II (5' Tall) 36" X 60" GATE
FAIR II 48 X 60 GATE	FAIRMONT II (5' Tall) 48" X 60" GATE
FAIR II 60 X 60 GATE	FAIRMONT II (5' Tall) 60" X 60" GATE
FAIR II 36 X 72 GATE	FAIRMONT II (6' Tall) 36" X 72" GATE
FAIR II 48 X 72 GATE	FAIRMONT II (6' Tall) 48" X 72" GATE
FAIR II 60 X 72 GATE	FAIRMONT II (6' Tall) 60" X 72" GATE

Fence Section Includes:

- Top and Bottom Rail
- 7/8" X 3" Pickets
- Routed 4" Sq. Post (2' taller than Fence)
- 4" Sq. Post Cap

All Post are routed as needed - Line Posts, Corner Posts or End Posts

Gates come Assembled and Width Cut as needed with NO Additional Charge

Hardware NOT Included with Gates but Sold Separately

Vinyl Picket Fence and Matching Gates

Melville - Picket Pool Fence with 7/8" x 1 1/2" Pickets

Item Number White	Item Description
MEL 36 X 72	MEL (3' Tall) 3' X 6' Section
MEL 48 X 72	MEL (4' Tall) 4' X 6' Section
MEL 60 X 72	MEL (5' Tall) 5' X 6' Section
MEL 72 X 72	MEL (6' Tall) 6' X 6' Section

MEL 36 X 36 GATE	MELVILLE (3' Tall) 36" X 36" GATE
MEL 48 X 36 GATE	MELVILLE (3' Tall) 48" X 36" GATE
MEL 60 X 36 GATE	MELVILLE (3' Tall) 60" X 36" GATE
MEL 36 X 48 GATE	MELVILLE (4' Tall) 36" X 48" GATE
MEL 48 X 48 GATE	MELVILLE (4' Tall) 48" X 48" GATE
MEL 60 X 48 GATE	MELVILLE (4' Tall) 60" X 48" GATE
MEL 36 X 60 GATE	MELVILLE (5' Tall) 36" X 60" GATE
MEL 48 X 60 GATE	MELVILLE (5' Tall) 48" X 60" GATE
MEL 60 X 60 GATE	MELVILLE (5' Tall) 60" X 60" GATE
MEL 36 X 72 GATE	MELVILLE (6' Tall) 36" X 72" GATE
MEL 48 X 72 GATE	MELVILLE (6' Tall) 48" X 72" GATE
MEL 60 X 72 GATE	MELVILLE (6' Tall) 60" X 72" GATE



Melville Picket Fence

Only 5' and 6' have the top picket section.

3' and 4' are Rackable, 5' and 6' are not Rackable

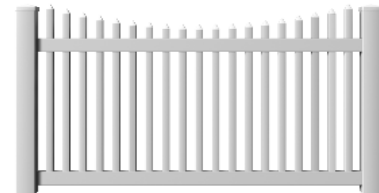
Fence Section Includes:

- Top and Bottom Rail
- Mid-Rail for 5' and 6' tall only
- 7/8" X 1 1/2" Pickets
- Routed 4" Sq. Post (2' taller than Fence)
- 4" Sq. Post Cap

Nantucket I (Ashberry V) - Concave Picket Fence with 7/8" X 1 1/2" Pickets

Item Number White	Item Description
NANTUCKET I 48 X 72	NANTUCKET I (4' Tall) 4' X 6' Section
NANTUCKET I 60 X 72	NANTUCKET I (5' Tall) 5' X 6' Section
NANTUCKET I 72 X 72	NANTUCKET I (6' Tall) 6' X 6' Section

NANTUCK I GATE 36X48	NANTUCKET I (4' Tall) 36" X 48" GATE
NANTUCK I GATE 48X48	NANTUCKET I (4' Tall) 48" X 48" GATE
NANTUCK I GATE 60X48	NANTUCKET I (4' Tall) 60" X 48" GATE
NANTUCK I GATE 36X60	NANTUCKET I (5' Tall) 36" X 60" GATE
NANTUCK I GATE 48X60	NANTUCKET I (5' Tall) 48" X 60" GATE
NANTUCK I GATE 60X60	NANTUCKET I (5' Tall) 60" X 60" GATE
NANTUCK I GATE 36X72	NANTUCKET I (6' Tall) 36" X 72" GATE
NANTUCK I GATE 48X72	NANTUCKET I (6' Tall) 48" X 72" GATE
NANTUCK I GATE 60X72	NANTUCKET I (6' Tall) 60" X 72" GATE



This style is Rackable.

Fence Section Includes:

- Top and Bottom Rail
- 7/8" X 1 1/2" Pickets
- Routed 4" Sq. Post (2' taller than Fence)
- 4" Sq. Post Cap

All Post are routed as needed - Line Posts, Corner Posts or End Posts

Gates come Assembled and Width Cut as needed with NO Additional Charge

Hardware NOT Included with Gates but Sold Separately

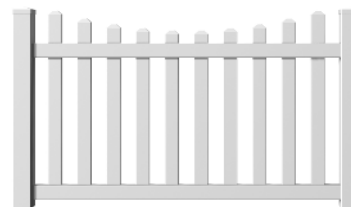
Call for Availability in Almond and Khaki

Vinyl Picket Fence and Matching Gates

Nantucket II (Ashberry II) - Concave Picket Fence with 7/8" X 3" Pickets

Item Number White	Item Description
NANTUCKET II 48 X 72	NANTUCKET II (4' Tall) 4' X 6' Section
NANTUCKET II 60 X 72	NANTUCKET II (5' Tall) 5' X 6' Section
NANTUCKET II 72 X 72	NANTUCKET II (6' Tall) 6' X 6' Section

NANTUC II GATE 36X48	NANTUCKET II (4' Tall) 36" X 48" GATE
NANTUC II GATE 48X48	NANTUCKET II (4' Tall) 48" X 48" GATE
NANTUC II GATE 60X48	NANTUCKET II (4' Tall) 60" X 48" GATE
NANTUC II GATE 36X60	NANTUCKET II (5' Tall) 36" X 60" GATE
NANTUC II GATE 48X60	NANTUCKET II (5' Tall) 48" X 60" GATE
NANTUC II GATE 60X60	NANTUCKET II (5' Tall) 60" X 60" GATE
NANTUC II GATE 36X72	NANTUCKET II (6' Tall) 36" X 72" GATE
NANTUC II GATE 48X72	NANTUCKET II (6' Tall) 48" X 72" GATE
NANTUC II GATE 60X72	NANTUCKET II (6' Tall) 60" X 72" GATE



This style is Rackable.

Fence Section Includes:

- Top and Bottom Rail
- 7/8" X 3" Pickets
- Routed 4" Sq. Post (2' taller than Fence)
- 4" Sq. Post Cap

All Post are routed as needed - Line Posts, Corner Posts or End Posts

Gates come Assembled and Width Cut as needed with NO Additional Charge

Hardware NOT Included with Gates but Sold Separately

Call for Availability in Almond and Khaki

Ranch Rail Fence

Ranch Rail Fencing - 2, 3 or 4 Rail Agriculture Fence

Item Number White	Item Description
AG 2 RAIL FENCE	8' SECTION 2-RAIL AG W/5' POST
AG 3 RAIL FENCE	8' SECTION 3-RAIL AG W/7' POST
AG 4 RAIL FENCE	8' SECTION 4-RAIL AG W/7' POST
AG FENCE RAIL 8'	AG FENCE RAIL 8' (replace rail)
TVRBRK-RM1.5X5	1.5 X 5.5 RAIL MOUNT BRKT

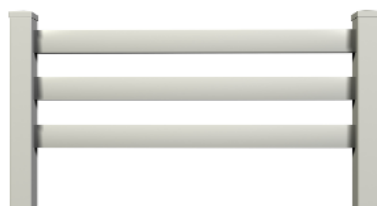
8' Fence Section Includes:

- Notched 1 1/2" X 5 1/2" Rails
- Routed 5" Sq. Post
- 5" Sq. Post Cap

***Only Available in White ***



2-Ranch Rail Fence



3-Ranch Rail Fence



4-Ranch Rail Fence

Extra Posts

Item Number White	Item Description
FENCE POST w/CAP 4"	ROUTED POST W/CAP - 4" Sq.
FENCE POST w/CAP 5"	ROUTED POST W/CAP - 5" Sq.

FENCE GATE HARDWARE

Item Number	Item Description
GDR-B	GATE DROP ROD KIT - needed for double gates
GHK-B	GATE HINGE KIT - Self-Closing
GLK-B	GATE LATCH KIT - 2-Way Latch



Triad Vinyl's railing kits contain quality engineered handrail materials from VEKA Inc., a leading extruder of vinyl components used in the window, door, fence, deck and guard rail industry with facilities thought the United States.



For more detailed information about VEKA Inc. and products visit.... <http://vekaolp.com>

Brochures and Warranties... <http://vekaolp.com/downloads>



Triad Vinyl also uses high quality components from LMT Mercer, currently the largest manufacturer of vinyl fence, deck and railing accessories in the US and Canada.

For more information about LMT and products visit....
<http://lmtproducts.com>

Brochures and Warranties... <http://lmtproducts.com/Warranties>
Installation Guides... http://lmtproducts.com/Installation_Instructions



LIMITED LIFETIME WARRANTY

VEKA warrants their rigid vinyl extrusions to be the finest quality available and to be superior for exterior fencing applications. VEKA warrants that their rigid vinyl extrusions will not chip, peel, blister, rot or corrode when used in accordance with VEKA installation, care & maintenance instructions.

VEKA does not warrant against uniform fading or color change due to normal weather conditions, as normal weathering will cause any surface to gradually fade or darken.

This warranty is for the lifetime of the product from the date of manufacture and is non-transferable. Should any defective material be found during the warranty period, VEKA will replace the defective material free of charge. This Limited Lifetime Warranty does not include misc. parts (Caps, Hinges, Latches, Support Posts) and labor.

VEKA will not be liable for labor charges or other costs or expenses in connection with the repair, removal, or installation of the original or replacement product.

This warranty does not cover liability for incidental or consequential damages for any cause whatsoever.

THIS WARRANTY IS IN LIEU OF ALL OTHER WARRANTIES, EXPRESSED OR IMPLIED, INCLUDING WARRANTIES OF MERCHANT ABILITY AND FITNESS FOR A PARTICULAR USE.

Lifetime Non-Prorated Limited Warranty

WHAT AND WHO IS COVERED FOR HOW LONG

LMT warrants to the original homeowner/customer that its vinyl (PVC) products will be free from manufacturing defects - including peeling, flaking and corroding - when subject to normal and proper use. Should any defect occur LMT will repair or replace, at its option, the defective product. LMT also reserves the right to refund the amount paid by the original owner for the product (but not including the cost of its initial installation). In no event shall LMT be liable or responsible for labor charges or other expenses whatsoever in connection with removal or installation of either the original or replacement product.

DESIGNER PRODUCTS

Designer Products are warranted for 20 years and same limitations and coverage as other LMT products.

LIMITATIONS

This warranty does not provide protection against any failure, defect or damage caused by situations and events beyond normal exposure conditions, including but not limited to:

Misuse, abuse, neglect or improper handling or storage; improper installation or installation not in strict adherence to LMT's written instructions; Use of accessories which do not properly receive and/or secure LMT products; Impact of foreign objects, fire, earthquake, flood, lightning, hail, hurricane, tornado or other casualty or act of God; Movement, distortion, collapse or settling of the ground or structure on which the product is installed; Any other cause not involving manufacturing defects in the material supplied by LMT;

Normal weathering is defined as exposure to sunlight and extremes of weather and atmosphere which will cause any colored surface to gradually fade, chalk, or accumulate dirt or stains. The severity of any condition depends on the geographical location of the product, the cleanliness of the air in the area, and many other influences over which LMT has no control.

This warranty does not apply to product which has been painted, varnished or coated over the manufacturer's original finish.

If LMT replaces any material under this warranty, it may substitute products designated by LMT to be of comparable quality or price range in the event the product initially installed has been discontinued or modified.

TRANSFERABILITY

This warranty is not transferable.

OTHER CONDITIONS

THIS WARRANTY REPLACES ALL OTHER ORAL OR WRITTEN WARRANTIES, LIABILITIES, OR OBLIGATIONS OF LMT. PERTINENT STATE LAW SHALL CONTROL FOR WHAT PERIOD OF TIME FOLLOWING THE SALE A HOMEOWNER/CUSTOMER MAY SEEK A REMEDY UNDER THE IMPLIED WARRANTY OF MERCHANTABILITY OR FITNESS FOR A PARTICULAR PURPOSE. IN NO EVENT SHALL LMT BE LIABLE FOR CONSEQUENTIAL OR INCIDENTAL DAMAGES OF ANY KIND, INCLUDING ANY DAMAGE TO THE BUILDING, ITS CONTENTS OR ANY PERSON HEREIN, RESULTING FROM THE BREACH OF THIS WARRANTY. LMT DOES NOT AUTHORIZE ITS DISTRIBUTORS OR DEALERS TO MAKE ANY CHANGE OR MODIFICATION TO THIS WARRANTY. SOME STATES DO NOT ALLOW LIMITATIONS ON, OR THE EXCLUSION OF, INCIDENTAL OR CONSEQUENTIAL DAMAGES, SO THE ABOVE EXCLUSIONS MAY NOT APPLY TO YOU.

This warranty gives you specific legal rights, and you may also have other rights which may vary from state to state.

WHAT THE CUSTOMER MUST DO

The homeowner/customer upon identifying any manufacturing defect must promptly notify LMT in writing and provide proof of the date of purchase. All notifications should be sent to:

LMT Mercer Group, Inc.
690 Puritan Avenue
Lawrenceville, NJ 08648
Attn: Consumer Services Department

The consumer may be required to submit a sample of the defective material to LMT for analysis. LMT upon confirming that a defect exists and that said defect is covered by this warranty will within a reasonable amount of time repair or provide replacement for the defective material. LMT reserves the right to refund the amount paid by the original owner for the defective material, and accessories, per the terms of this warranty.

This warranty is effective for products purchased after March 15, 2000.